

### File Transfer

To follow a more direct path you can:

1. Unlock your Android device.
2. With a USB cable, connect your device to your computer.
3. On your device, tap the "USB for..." notification.
4. Select Transfer files.
5. A file transfer window will open on your computer. Use it to drag files.
6. When you're done, eject your device from Windows.
7. Unplug the USB cable

But if you prefer to do more file management consider choosing "Open Folder to view Device or Files" when the computer detects the phone plugged in. You will still need to unlock the device and may need to OK the computer accessing it (a popup message will appear on phone verifying this if you haven't connected to this computer before.)

*\*NOTE: you can charge your phone on any computer without unlocking or allowing access*

If you have expandable storage you will see two different options in the Windows Explorer folder – Card and Phone. Both can be navigated as if they were standard storage devices.

*\*NOTE: files can be transferred to the phone as well as from it*

### Connecting Accounts

#### General Accounts

Settings → Personal → Accounts

Within this screen you can access a list of all registered accounts on the phone. The Google account will list the registered account at the top and list Syncing options

#### Sync

Any files generated by Google apps that you would like automatically backed up to your cloud account should be set to Sync within this screen.

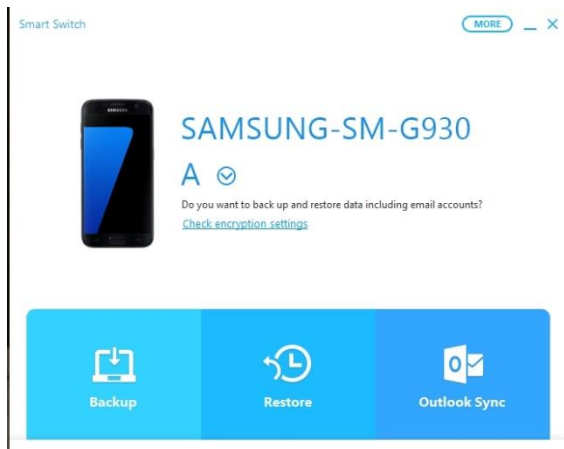
#### Google Account Settings

These settings relate to the security and privacy preferences of your Google account. So you would first make sure the correct account is assigned in the Accounts section, then go to Google account settings to adjust the details of that account, if necessary.

## Local Backup

### SmartSwitch

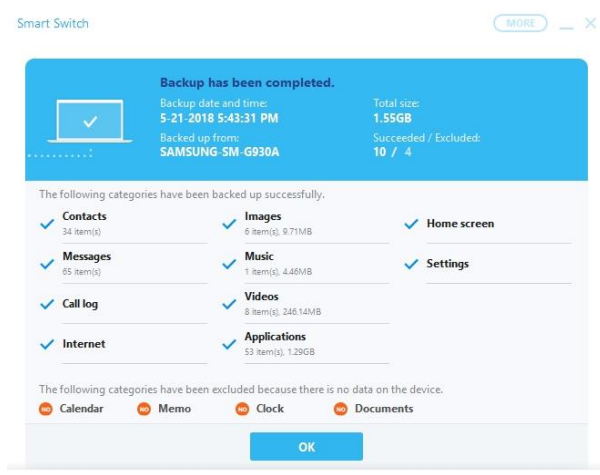
SmartSwitch is an app that can be installed on both your Android phone and your Windows desktop. Once it has been installed connect your phone to PC via a USB cable, open the app on the computer and you will see this window:



After selecting Backup it will begin copying your phones content one item at a time (Contacts, Messages, Call log, Internet, Images, Music, Videos, Applications, Home screen, Settings, Calendar, Memo, Clock, and Documents.)



When the backup is complete you will receive a summary of the results.



If and when the time comes to restore to your phone again open the app and this time choose Restore.

## Cloud Backup Techniques

Settings→Personal→Backup & Reset

Turn Back up my data “On”. This will back up settings and app data from your phone. To backup content (images, documents, music, etc.) manage Syncing in Google account options.

## Streaming vs. Local Storage

When working with media apps the user needs to make a choice between retaining files locally on the device or accessing them through streaming. Streaming provides the advantage of, in most cases, larger selection and reduced storage requirements, but has the disadvantage of using data requirements and, potentially, playing poorly. Many apps, e.g. Netflix, offer both choices for the user but some are designed to work specifically with local files or to access the cloud.

## More Settings

### Configuring Your Android Phone

- System
  - Language and input – control preferred languages used, keyboard options, and text to speech pace
  - Battery
    - Power save
    - Fast charging options
    - Display batter settings
    - Overview of battery use
  - Storage
    - Check usage
    - Format external storage (SD Card)
  - Date and time
  - Help
  - About device
- Personal
  - Wallpaper
    - Set for lock screen and home screen
    - Multiple pictures are allowed
  - Themes
    - Pre-packaged fonts, backgrounds, and color schemes available
  - Home Screen
    - Turn Briefing on/off
    - Widgets
      - Expansions of apps to keep running on screen at all time. They command a large amount of the resources
    - Screen Grid
      - Control how much space you have for apps per screen
      - Add extra homepages
  - Lock Screen and security
    - Fingerprint settings
    - Notifications on Lock Screens

- Find my mobile
    - Encrypt SD card
    - Secure Startup
  - Privacy and Safety
    - Location settings
    - App permissions
    - Send SOS messages
  - Easy Mode
    - Toggle between Standard and Easy mode
    - Easy mode offers larger items and access to basic apps
  - Accessibility
    - Tools for users suffering from vision, hearing, or dexterity impairments
  - Accounts
    - View accounts registered to apps on phone and whether they are synchronizing
  - Google
    - Check account settings and preferences associated with Google accounts and applications
  - Backup and reset
    - Verify that your data is being automatically backed up (preferably to a Google account)
    - Reset settings on phone if necessary
- Device
  - Sounds and vibrations
    - Control ringtones, notification sounds, and system sounds/vibrations for different tasks
  - Notifications
    - Select which apps you want to receive notifications from
    - Advanced options allow more specific controls for some apps (lock screen notifications, sounds, priority settings, etc)
  - Display
    - Brightness
    - Screen timeout
    - Font/icon size
    - Screensaver
  - Advanced Features
    - Turn on or off a number of advanced gesture controls
  - Applications
    - Specific settings for all applications
    - Particularly useful for storage controls
- Connections
  - Wi-Fi
  - Bluetooth
  - Airplane mode
  - Mobile Hotspots
  - Data Usage
  - Mobile Networks
  - NFC and payment
  - More connection settings
- Quick Settings
  - Quick access to the most popular options from the previous categories.

## Tips

### Setup Google Play to Stream Music

Just because your music collections is in iTunes doesn't mean you can't have your songs on Android. To bring music songs over from iTunes, you could use an app like DoubleTwist, but I prefer streaming my music from Google Play, freeing up space on the phone for more photos, videos and apps.

Just install the Music Manager software on your computer, and tell it where your music library is located. The software will match your collection to Google's own library for free (similar to iTunes Match), and will upload any songs it can't match. Then, you can use the Google Play Music app for Android to play your songs. The app can also download albums and playlists for offline listening.

### Use Google Play Website to Install Apps Remotely

The next time you find a good Android app suggestion on the web, don't bother taking out your phone to download them. As long as you have visited Google Play on your phone before, and have connected your Google account, you can remotely install apps through the Google Play website. Just click the blue "Install" or "Buy" button on any app page, then select your device from the drop-down list. The app should appear on your phone shortly thereafter.

### Use Google Maps to Send Directions to Your Phone

If you are logged into your Google account when using googlemaps.com you can push directions directly to your phone.

### Use Google Play's Refund Options

For purchased apps you have 15 minutes to return to the apps page in Google Play and press the "refund" button