

How to Use Infusible Ink Markers or Pens With Mugs

What you need

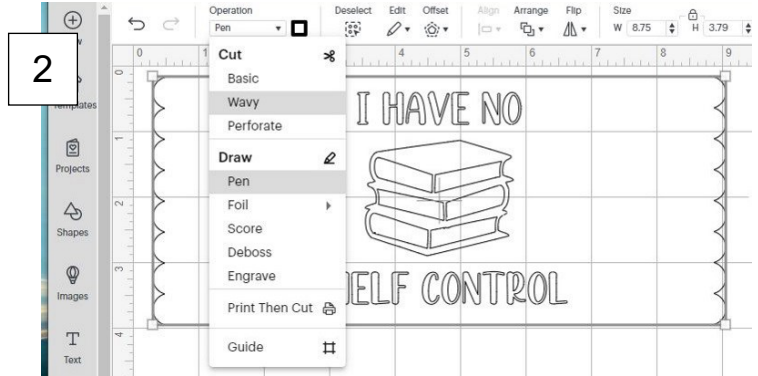
- Cricut Maker cutting machine
- LightGrip Machine Mat (blue)
- Cricut Mug Press
- Cricut EasyPress Mat
- Cricut Infusible Ink Mug Blank or a sublimation mug blank
 - Mugs should be 11-16 oz with a straight wall, a diameter of 3.2-3.4 inches, and a maximum height of 4.7 inches. Cappuccino mugs, curved tumblers, and skinny tumblers will not fit in the Mug Press.
 - **IMPORTANT: REGULAR MUGS DO NOT WORK WITH INFUSIBLE INK/SUBLIMATION INK.**
- Infusible Ink Pens or Markers
- Heat resistant tape
- Copy paper
- Butcher paper
- Lint roller or isopropyl alcohol
- Scissors
- Design Space software on computer



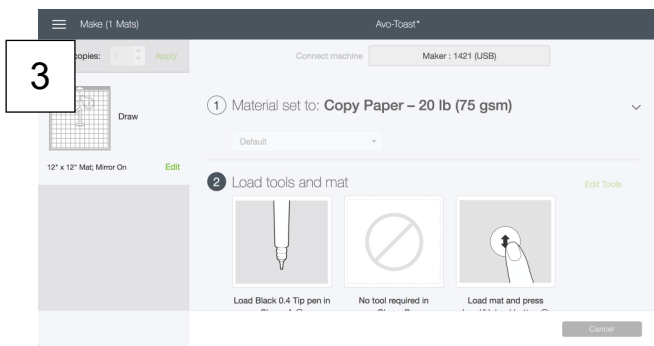
Draw your design



1 Place sheet of copy paper onto a LightGrip Machine Mat.



2 In Design Space, create your mug design. Set your Operation to **Pen** and assign a pen or marker color



3 Click the **Make It** button. Select Browse all materials, then **Copy Paper**.
Note: Be sure to **Mirror** your design.



4 Insert Infusible Ink Pen or Marker into Clamp A, load mat into machine, then press flashing **Go** button.
Tip: If you have assigned multiple pen colors to your design, Design Space will prompt you to load specific colors at specific times.



5 Once the design is complete, unload your mat from the machine. Remove your design from the mat and, if desired, color it in using Infusible Ink Markers or Pens.
Tip: To ensure the ink does not bleed through onto your surface, place a second sheet of paper beneath your design before coloring.

Apply your design

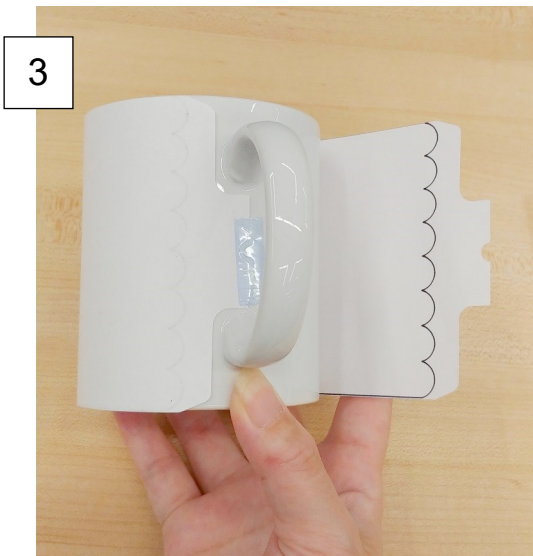


Turn on the Cricut Mug Press to preheat. The lever should be up.

The Mug Press will beep when it's fully preheated.



Use a lint roller or isopropyl alcohol to remove any debris on the mug.



Evenly wrap your design around the mug. Secure with heat resistant tape.

Make sure your design is aligned correctly around the mug.



DO NOT SKIP THIS STEP:

Take 3 sheets of butcher paper cut to your mug size. Wrap the sheets of butcher paper around the mug. Secure with heat resistant tape.

This protects the Mug Press from stains/damage.

5



Insert mug into the Mug Press as pictured.

Push down lever. Check that your design is fully covered by the blue heating element.

6

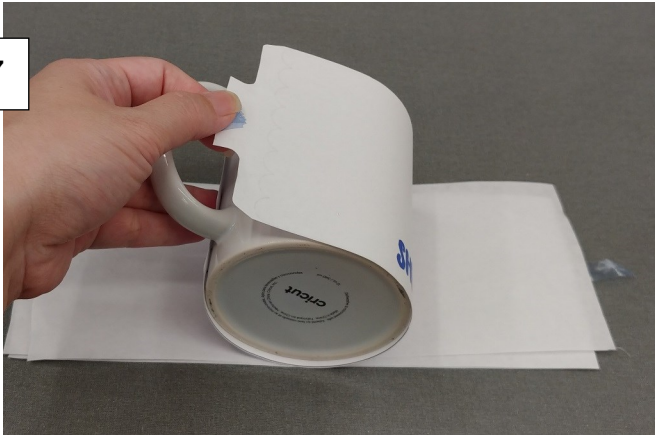


After about 6 minutes, the Mug Press will beep. Put on heat resistant gloves. Lift lever and carefully lift mug out of Mug Press.

CAUTION: MUG WILL BE HOT!

Let cool completely before handling.

7



Place mug onto EasyPress mat to cool. Mug will take approximately 15 minutes to cool.

Once cool, slowly remove butcher paper sheets, tape, and design from the mug.

Tip: Never reuse butcher paper for another project.

8



You did it!

Mug Care Instructions

- Hand wash with warm water or in a dishwasher (top rack only).
- Avoid extra cycle options such as heated drying cycles, sanitize, and steam cycles.
- Liquid, power, and pod detergents are safe to use.
- For best results, avoid scrubbing pads, heavily dyed detergents, and steel wool, since these can damage the outer coating of the mug and the transferred image.